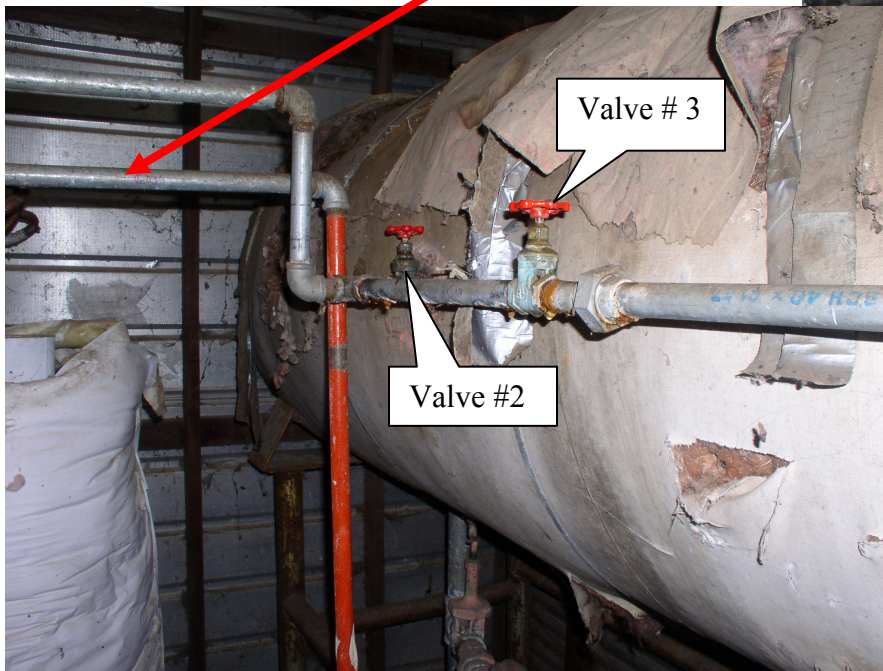
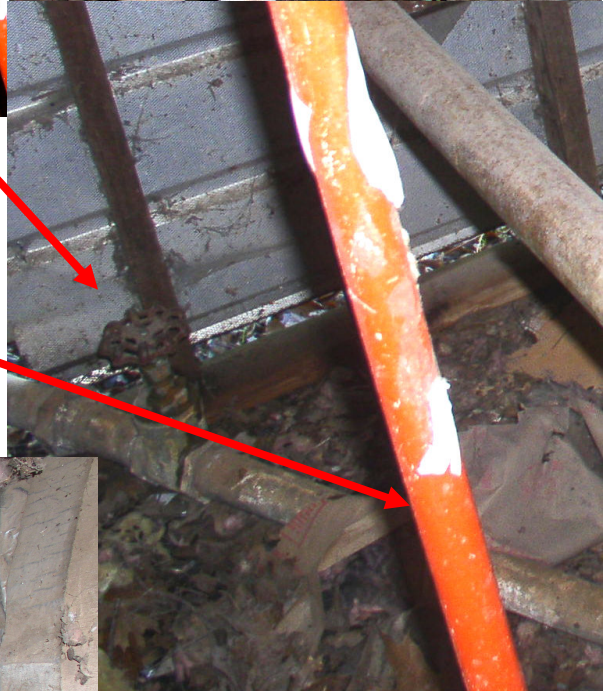


Las Posadas Operation Manual  
Boy Bathroom Area:

1. Cold water shut off valve on 2 inch supply line. The valve is located toward the rear of the hot water heater shed on the back of the Boy bathroom. Valve #1



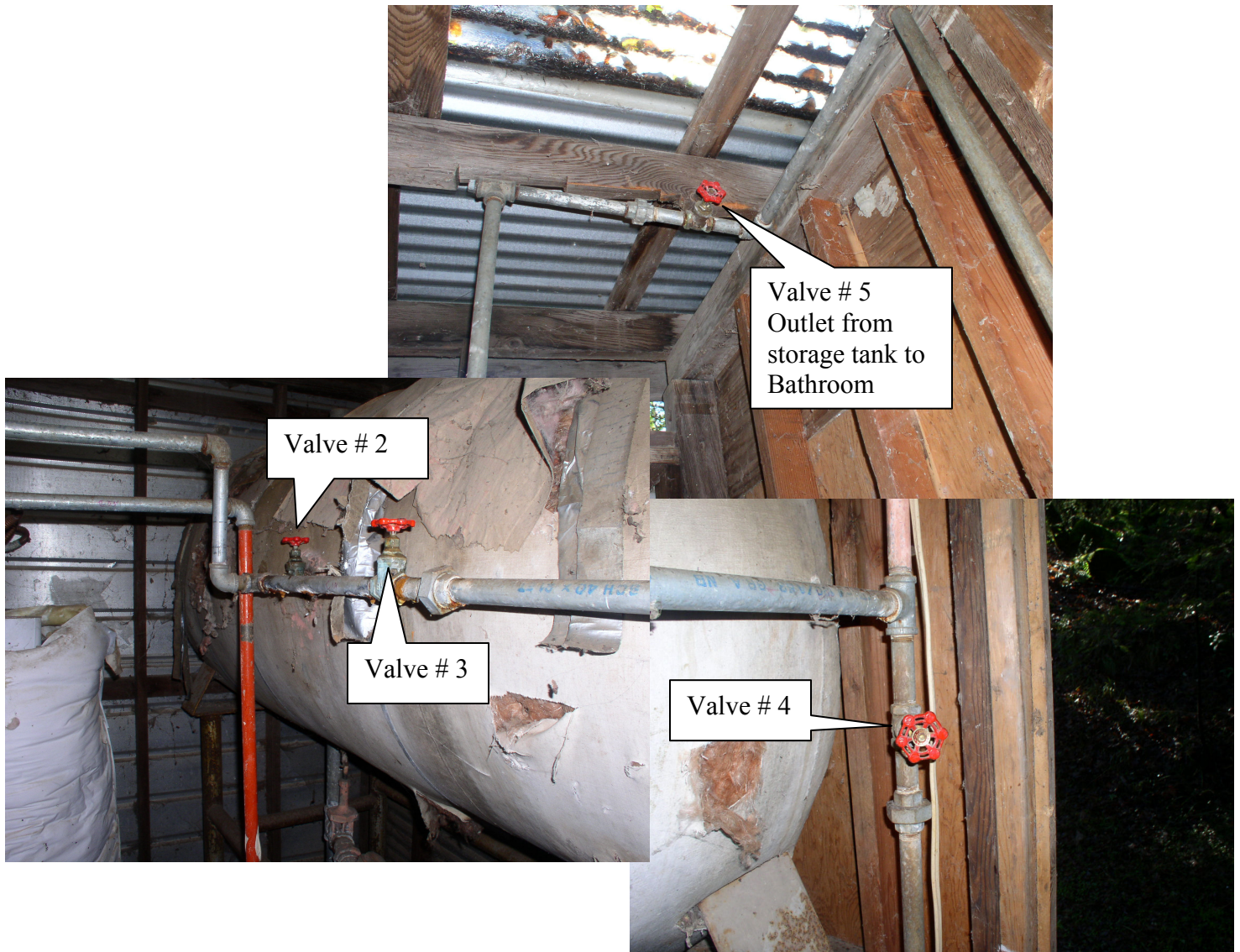
2. Cold water supply line to the hot water heaters.



3. Valve # 2 is open and valve #3 and # 4 are closed when circulating pump is in operation. Summer operation.

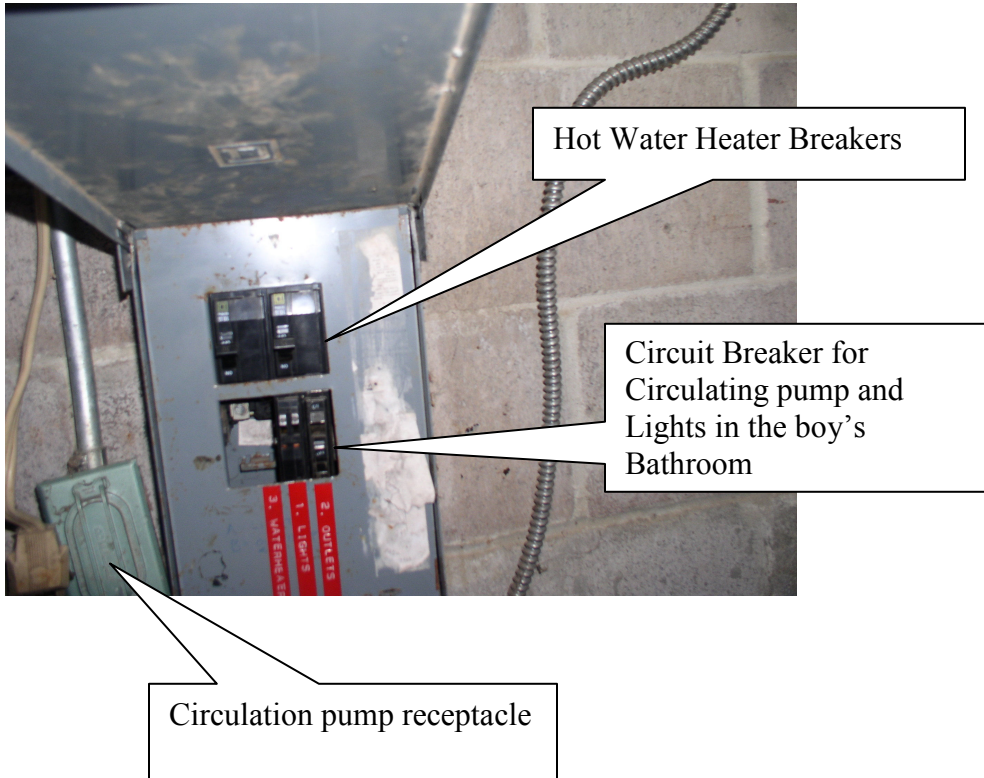
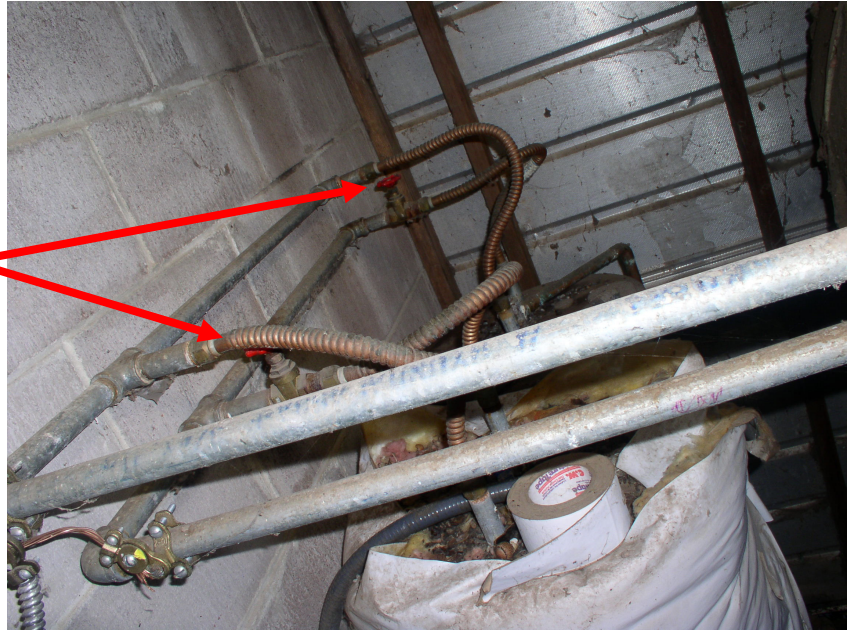
4. Valve # 2 and # 4 are closed and valve # 3 is open when circulation pump is not in operation. Winter operation.

5. Valve #5 is open when recirculating pump is in operation, Summer operation.



6. Valve # 5 should be closed when circulating pump is not in operation, Winter operation

- 7. Hot water heaters can be shutoff individually if only one hot water heater is needed to supply hot water for a small group. Turn off the cold water inlet valve at the water manifold. Remember to shut off the Circuit breaker for the electrical supply to the hot water heater.



Note: By minimizing the amount of hot water heated on weekends with a limited number of attendance the camp can save money.