

Las Posadas Pool Cleaning

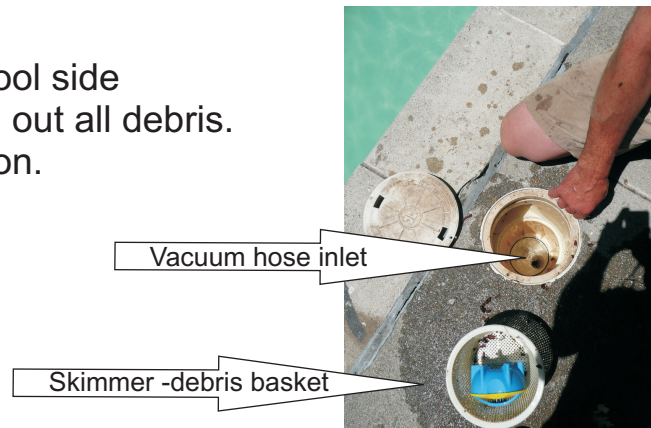
Pool Vacuum/Sweep Directions

- 1) Check pool water level. It should be half way up pool Skimmers. If not turn on water Tag # 5 located near back door of pool room.

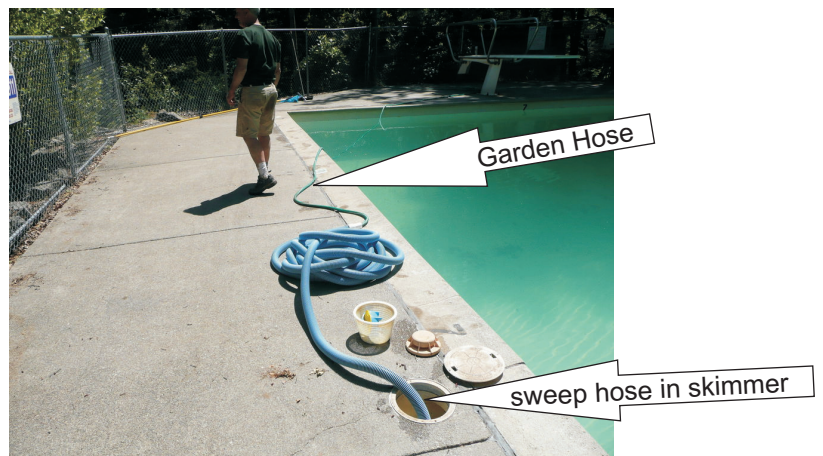
When water level reaches Half Way up skimmers, turn water off.



- 2) Remove lids from pool side skimmers and clean out all debris. Pool pumps will be on.



- 3) Fill pool sweep hose with water from garden hose. insert other end into skimmer inlet.



Pumps are on!

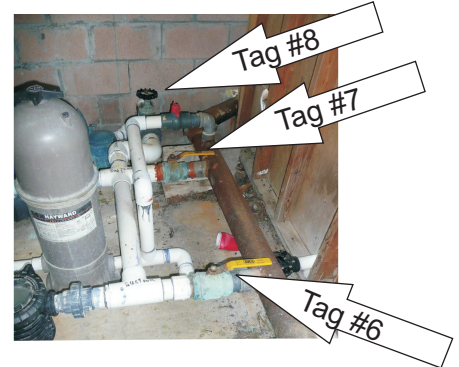
Las Posadas Pool Cleaning

Pool Vacuum/Sweep Directions



Attach pole and sweep to vacuum hose.

Go to pump room and turn off pool bottom drain, tags # 6 & # 7



Back to pool and vacuum large debris from pool.

Disconnect all vacuum/sweep equipment replace all baskets and covers.

When done sweeping, Clean pump skimmer baskets next.



Turn off Pumps Number 1 & 2
Close Valves tag # 6, #7 & # 8
and outdoor valves tag # 11 & #12

Open pump debris lid,
remove basket and clean
all debris out.

Pump 2

twist off debris lid

Pump 1



After cleaning baskets, return lids to pumps and make sure they seal.

Then open valves tags 6,7 & 8 and outdoor valves tags 11 & 12.
This completes pool sweep procedure.

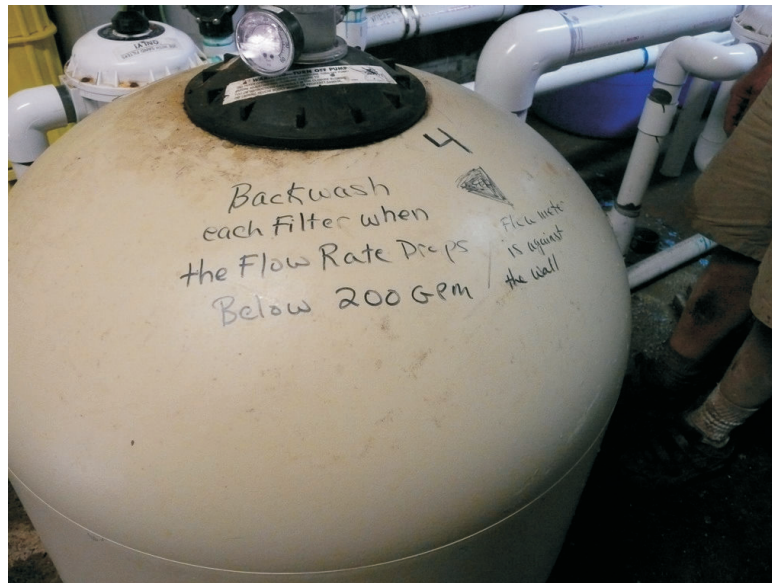
Turn pumps #1 & 2 and check flow meter

Las Posadas Pool Cleaning

Backwash sand filter procedure

Sand filters require a backwash cleaning when the flow rate drops below 200 gallons a minute.

Below is a sand filter, Las Posadas pool has 4 of these to keep our pool clean.

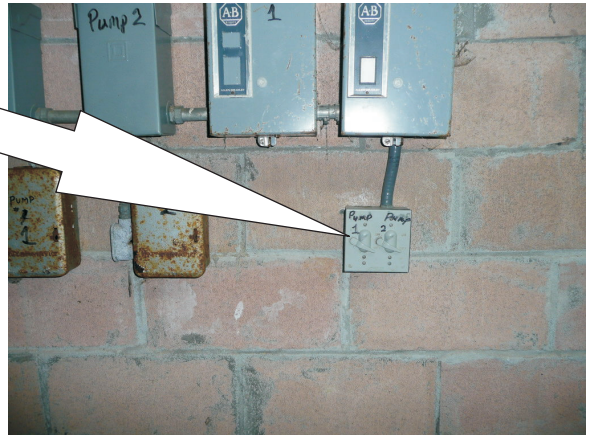


If the meter does not read 200 gallons a minute follow the procedure to backwash the sand filters.

Las Posadas Pool Cleaning

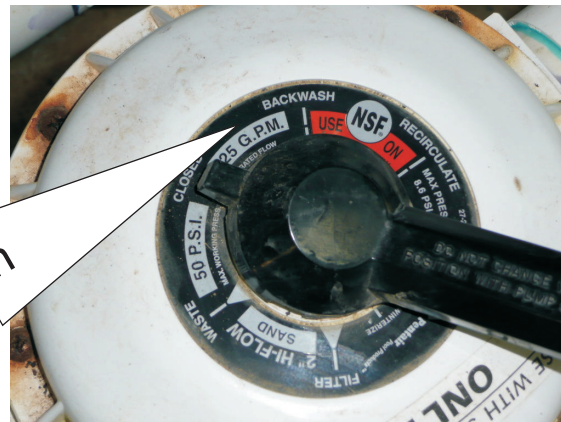
Backwash sand filter procedure

- 4) Inside pool room on back wall turn off both pump switches Number 1 & 2



Tag # 8

Turn off black skimmer valve



Backwash

Turn filter valves #1 & # 2 to the backwash position

open red valve behind Sand filter 1- Tag # 9



Tag #9

Las Posadas Pool Cleaning

Backwash sand filter procedure



Open valve -Tag #10 to outdoor

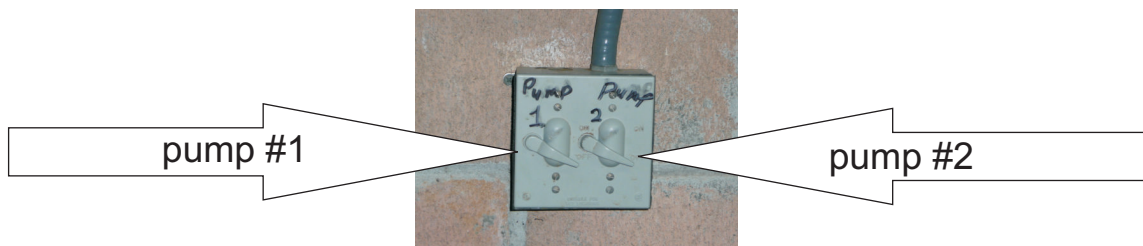
Then turn on Pump #1 and watch outdoor for clear water. (2-5 minutes)

When water appears clear to off pump #1 and turn tags # 1 & 2 to filter position.

Turn tags # 3 & 4 to backwash and turn Pump # 2 on and watch outdoor for clear water. (2-5 minutes)



Filter outlet to outdoor



When water is all clear turn off pump #2 and close tags #9 & #10

Turn Tags # 3 & 4 back to filter position.

Then open tags #8

Las Posadas Pool Cleaning

Backwash sand filter procedure

Check to make sure automatic chlorination hose is in liquid.

If not move to next barrel.

When 2 barrels are empty contact someone from LP Board to have to barrels refilled.



Back to pool to check that water is half way up skimmer. If not turn of Tag # 5



Very important to make sure tag #5 is shutoff after filling pool. If not it will drain all camp water from main supply